

GEMCRAFT HOMES

OVER 25 YEARS OF BUILDING DREAMS

Community: Tiller Estates **Model:** Bristol II **Hours:** Saturday and Sunday 1-4pm



**50 Tiller Farm Lane
Perryville, MD 21903**

\$539,900

Home Type: Single Family

Square Feet: 1,947 +/-

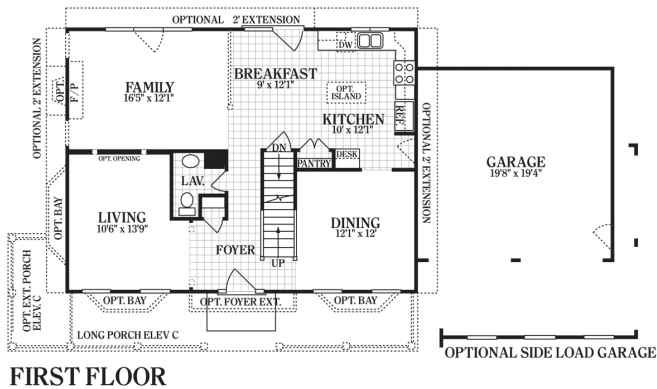
Bedrooms: 4

Bathrooms: 2.5

Garage: 2 Car

Stories: 2

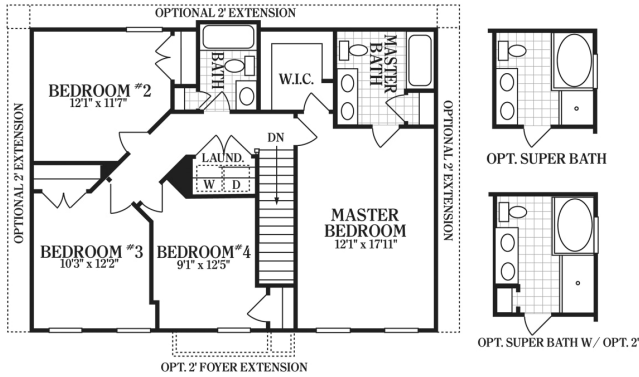
Bring your animals and toys .. this 3 acre home site boasts a Bristol 2 with 2 car garage, partial stone front with porch with all extensions for the most living space. Only 2 minutes from I-95 and Route 40. With plenty of room to expand inside and out, it's time to make Tiller Estates your new home community.



First Floor

The availability, price, and / or features of this home are subject to change without prior notice. Details and dimensions shown on the floor plan are approximate and subject to change. Illustrations are an artist's conception and may vary in detail from floor plans and specifications. Accurate as of 8/24/2019.

Community: Tiller Estates **Model:** Bristol II **Hours:** Saturday and Sunday 1-4pm



SECOND FLOOR

Second Floor

The availability, price, and / or features of this home are subject to change without prior notice. Details and dimensions shown on the floor plan are approximate and subject to change. Illustrations are an artist's conception and may vary in detail from floor plans and specifications. Accurate as of 8/24/2019.