

# GEMCRAFT HOMES

OVER 25 YEARS OF BUILDING DREAMS

**Community:** Shepherd's Village **Model:** Chesapeake IV **Hours:** Sat & Sun 11-5 or By Appt.



**338 Appleby School Rd  
Cambridge, MD 21613**

**\$174,990**

**Home Type:** Townhome

**Square Feet:** 1,541 +/-

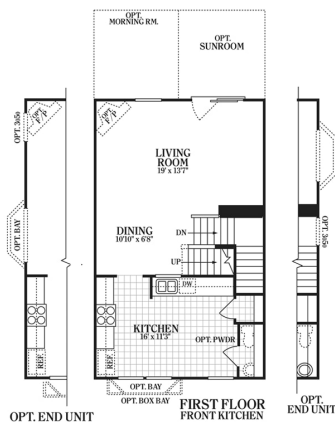
**Bedrooms:** 3

**Bathrooms:** 2.5

**Garage:** 1 Car

**Stories:** 3

Lovely 3 bedroom 2 1/2 bath garage duplex home in historic Cambridge, MD conveniently located to shopping, restaurants, water sports and attractions. This home boasts spacious living with a finished lower level, bright kitchen with maple cabinets, granite countertop and Whirlpool appliances, master bedroom with full bath all on a large home site offering space for entertaining. Come and see what historic Cambridge MD has to offer. To schedule a tour of this lovely home, call Della Keyes at 443-225-6833.



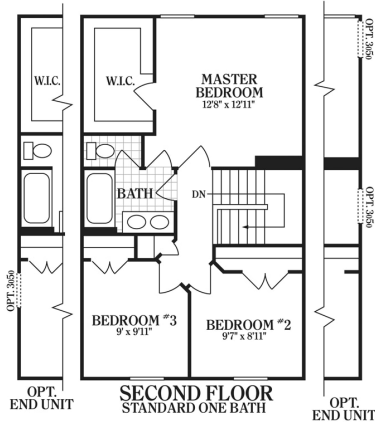
First Floor with Front Kitchen

The availability, price, and / or features of this home are subject to change without prior notice. Details and dimensions shown on the floor plan are approximate and subject to change. Illustrations are an artist's conception and may vary in detail from floor plans and specifications. Accurate as of 8/24/2019.

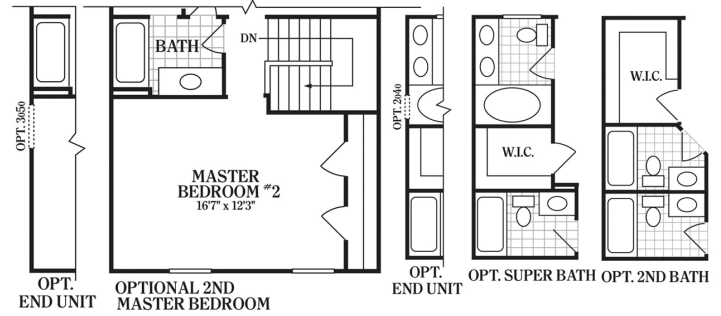
# GEMCRAFT HOMES

OVER 25 YEARS OF BUILDING DREAMS

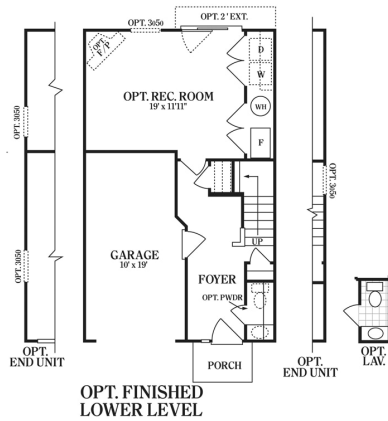
**Community:** Shepherd's Village **Model:** Chesapeake IV **Hours:** Sat & Sun 11-5 or By Appt.



Second Floor



Optional Second Master



Lower Level

The availability, price, and / or features of this home are subject to change without prior notice. Details and dimensions shown on the floor plan are approximate and subject to change. Illustrations are an artist's conception and may vary in detail from floor plans and specifications. Accurate as of 8/24/2019.